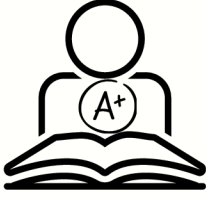


# REQUIREMENTS



No Cost for students or families



2.5 GPA required



WIDA Language Proficiency Required



No FAFSA or Financial documentation

# LOCATIONS

Lighthouse Academy - Barry County  
2950 M-179 Hastings, MI 49058  
P: 1-616-295-5993

Lighthouse Academy - Eagle Village  
4507 170th Ave Hersey, MI 49639  
P: 1-231-305-6680

Lighthouse Academy - JDC  
12120 Fillmore St West Olive, MI 49460  
P: 1-616-494-5407

Lighthouse Academy - JJI  
12263 James St Holland, MI 49424  
P: 1-616-393-4427

Lighthouse Academy - JTC  
205 East Apple Ave Muskegon, MI 49442  
P: 1-231-724-8850

Lighthouse Academy - Muskegon  
1161 W Southern Ave Muskegon, MI 49441  
P: 1-231-437-8190

Lighthouse Academy - South  
3330 36th St SE Grand Rapids, MI 49512  
P: 1-616-600-6518

Lighthouse Academy - The Pier  
701 Ball Ave NE Grand Rapids, MI 49503  
P: 1-616-965-9702

Lighthouse Academy - Waalkes  
1501 Cedar St NE Grand Rapids, MI 49503  
P: 1-616-965-9700

# LIGHTHOUSE ACADEMY

## EARLY MIDDLE COLLEGE



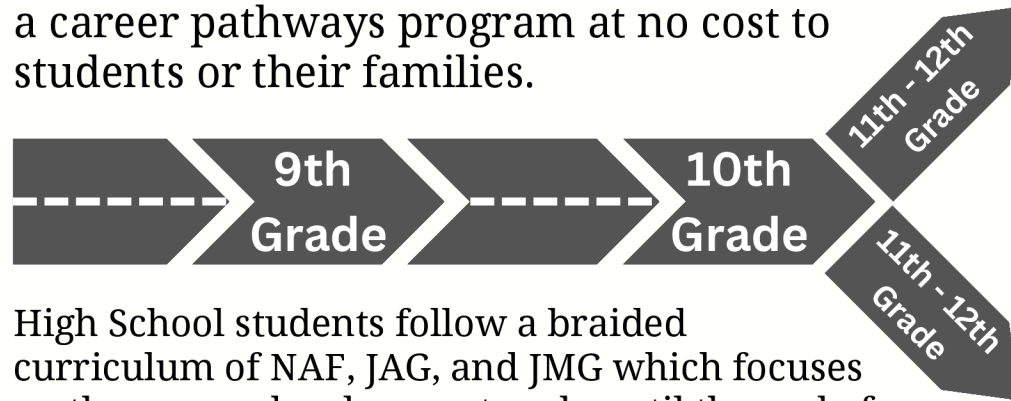
Graduate with a High School Diploma and Associate Degree.



CREATING HOPE THROUGH ACADEMIC SUCCESS IN SPITE OF LIFE'S STORMS.

# PROGRAM DETAILS

Lighthouse Academy has partnered with Ferris State University and Davenport University to provide the Early Middle College to students as a career pathways program at no cost to students or their families.



High School students follow a braided curriculum of NAF, JAG, and JMG which focuses on the career development cycle until the end of 10th grade. At that time, students may choose one of three pathways to earn an Associate degree in the Health Science field.

Starting in their 11th year, students begin completing coursework which counts toward both a High School Diploma and an Associate degree. All classes are held on-site at Lighthouse Academy.

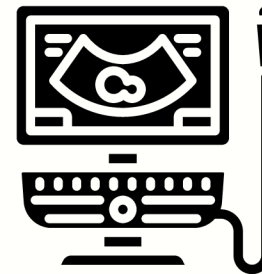
Students who start the program but do not successfully complete the practicum will receive a certificate instead of Associates Degree.

## Health Science Degrees



### Dental Hygienist

A Dental Hygienist is a skilled medical professional who performs various duties under the supervision of a Dentist to help patients achieve and maintain good oral health.



### Diagnostic Medical Sonography

Diagnostic medical sonographers specialize in creating images, sonograms or ultrasounds, that depict the body's organs and tissues.



### Medical Assisting

Medical assistants perform administrative and clinical duties such as maintaining patient records, preparing patients and rooms for examination, assisting with exams, and front-desk tasks.

